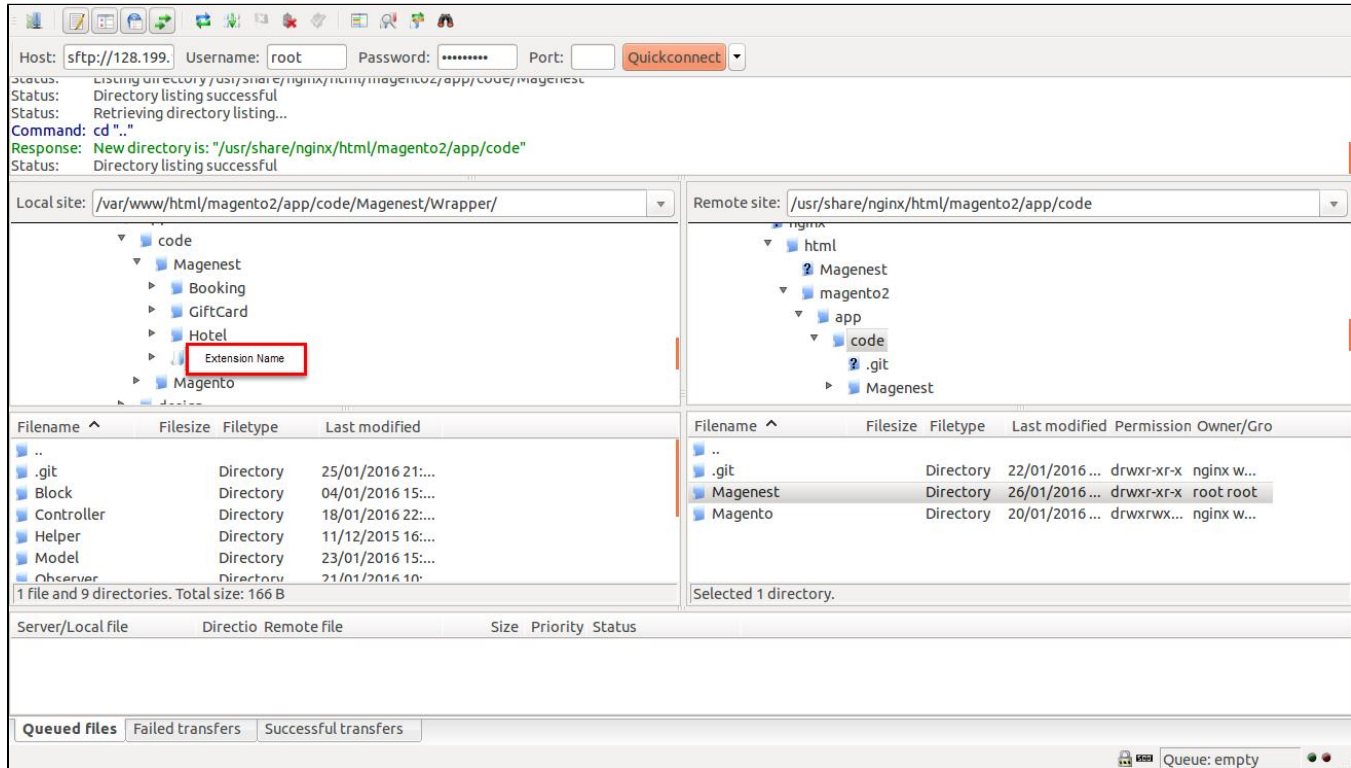


1. Multiple Warehouses Installation Guides

Here we will guide you through the installation process of our extension. First off, open FileZilla, log in to your host as follows:



In the above example we switched the local site to the extension directory, and the remote site to the code directory. Now on the remote site window, inside app/code directory, create a folder named **Magenest** and go inside it. Now on your local site window, right click on **Extension Name** and click **Upload**. The extension will be uploaded onto your host in a few minutes.

The second method will require you to compress the extension into .zip or .tar.gz format, then execute the following command in your Command Line /Terminal:

```
scp <path to your extension> <ssh server>:<path to Magenest directory>
```

Then log into your ssh server, go to Magenest directory and execute the following command to decompress the module:

```
unzip <.zip compressed extension>
```

Or

```
tar -xzf <.tar.gz compressed extension>
```

Now go to your **Magento root directory**, say it's named **magento2**, and execute the following commands:

```
php bin/magento setup:upgrade
php bin/magento setup:di:compile
php bin/magento setup:static-content:deploy
```

After running all these, your Command line/Terminal window might look like this:

```

Module 'Magento_BundleSampleData':
Module 'Magento_Rss':
Module 'Magento_DownloadableSampleData':
Module 'Magento_Captcha':
Module 'Magento_OfflineShippingSampleData':
Module 'Magento_ConfigurableSampleData':
Module 'Magento_SalesSampleData':
Module 'Magento_ThemeSampleData':
Module 'Magento_ProductLinksSampleData':
Module 'Magento_ReviewSampleData':
Module 'Magento_SendFriend':
Module 'Magento_Ui':
Module 'Magento_Sitemap':
Module 'Magento_Authorizenet':
Module 'Magento_Swagger':
Module 'Magento_Swatches':
Module 'Magento_SwatchesSampleData':
Module 'Magento_CatalogRuleSampleData':
Module 'Magento_TaxImportExport':
Module 'Magento_TaxSampleData':
Module 'Magento_CatalogRuleConfigurable':
Module 'Magento_CmsSampleData':
Module 'Magento_Translation':
Module 'Magento_Shipping':
Module 'Magento_Ups':
Module 'Magento_UrlRewrite':
Module 'Magento_GroupedProductSampleData':
Module 'Magento_Usps':
Module 'Magento_Variable':
Module 'Magento_Version':
Module 'Magento_Webapi':
Module 'Magento_SalesRuleSampleData':
Module 'Magento_CatalogWidget':
Module 'Magento_WidgetSampleData':
Module 'Magento_Wishlist':
Module 'Magento_WishlistSampleData':
Please re-run Magento compile command
[root@centos-2gb-sgp1-01 magento2]# sudo chmod -R 777 var pub
[root@centos-2gb-sgp1-01 magento2]#

```

Finally, you need to flush the cache by either type this into the Command Line/Terminal:

```
php bin/magento cache:flush
```

Or go to **System > Cache Management**. Click the following buttons to completely clear the store cache:

1. Flush Magento Cache
2. Flush Cache Storage
3. Flush Catalog Images Cache
4. Flush JavaScript/CSS Cache

The screenshot shows the Magento Admin interface. On the left, the 'System' menu is open, and 'Cache Management' is highlighted. In the top right corner, the 'Flush Magento Cache' button is highlighted with a red box. Below the menu, a table lists various cache types and their status.

| | Description | Tags | Status |
|--------------------------|---|--------------------------|----------|
| | Various XML configurations that were collected across modules and merged. | CONFIG | DISABLED |
| | Layout building instructions. | LAYOUT_GENERAL_CACHE_TAG | DISABLED |
| | Page blocks HTML. | BLOCK_HTML | DISABLED |
| | Collection data files. | COLLECTION_DATA | DISABLED |
| | API interfaces reflection data. | REFLECTION | DISABLED |
| | Results of DDL queries, such as describing tables or indexes. | DB_DDL | DISABLED |
| | Entity types declaration cache. | EAV | DISABLED |
| | Integration configuration file. | INTEGRATION | DISABLED |
| <input type="checkbox"/> | Integrations API Configuration | INTEGRATION_API_CONFIG | DISABLED |
| <input type="checkbox"/> | Page Cache | FPC | DISABLED |
| <input type="checkbox"/> | Translations | TRANSLATE | DISABLED |

Now you can go to your store and check if the extension is working as expected.