

Virtual Try-On - User Guide

Thank you for purchasing our extension. If you have any questions that are beyond the scope of this document, please feel free to contact us via support@magenest.com

By: Magenest | Support Portal: <http://servicedesk.izysync.com/servicedesk/customer/portal/7>

- 1 [Introduction](#)
 - 1.1 [Highlight Keys:](#)
 - 1.2 [System Requirements:](#)
- 2 [Admin Configuration](#)
 - 2.1 [Virtual Try-On Settings:](#)
 - 2.2 [Upload Gallery Images:](#)
- 3 [Frontend Experience](#)
- 4 [Update](#)
- 5 [Support](#)

Introduction

Highlight Keys:

AI Virtual Try-On is a feature that allows online shoppers to preview how a product may look on a person before purchasing. The feature can be enabled or disabled for selected products from the admin panel.

On the storefront, customers can upload their own photo or choose a sample image from the gallery, validate the image, and generate an AI-powered try-on result directly on the product detail page.

For Admin:

- Enable or disable Virtual Try-On for each product based on product suitability.
- Control the experience at product level, including parent products such as configurable products.
- Upload and organize gallery images in the Magento media gallery for shoppers to use as sample images.
- Improve product visualization and support a more interactive product detail page experience.

For Customer:

- Try products visually using their own uploaded photo or a preloaded gallery image.
- Preview the uploaded image before continuing to the validation and generation step.
- Receive AI validation to help ensure the uploaded image is suitable for try-on generation.
- Reduce uncertainty during online shopping and make product evaluation more convenient.

System Requirements:

Your store should be running on Magento 2.4.x

Admin Configuration

Virtual Try-On Settings:

Step 1: After logging in to the admin panel, go to **Catalog > Products**.

System Messages: 1

Reload Data

Go to Advanced Reporting

Chart is disabled. To enable the chart, click here.

Revenue: \$0.00, Tax: \$0.00, Shipping: \$0.00, Quantity: 0

Items	Total
1	\$123.00
1	\$22.00
1	\$0.00
1	\$29.00

Search Term	Results	Uses
bu-x	1	1

Step 2: Select the product you want to enable Virtual Try-On for, then click **Edit**.

Note: For product types that contain child products, such as Configurable Product, enable Virtual Try-On only on the parent product.

System Messages: 1

Add Product

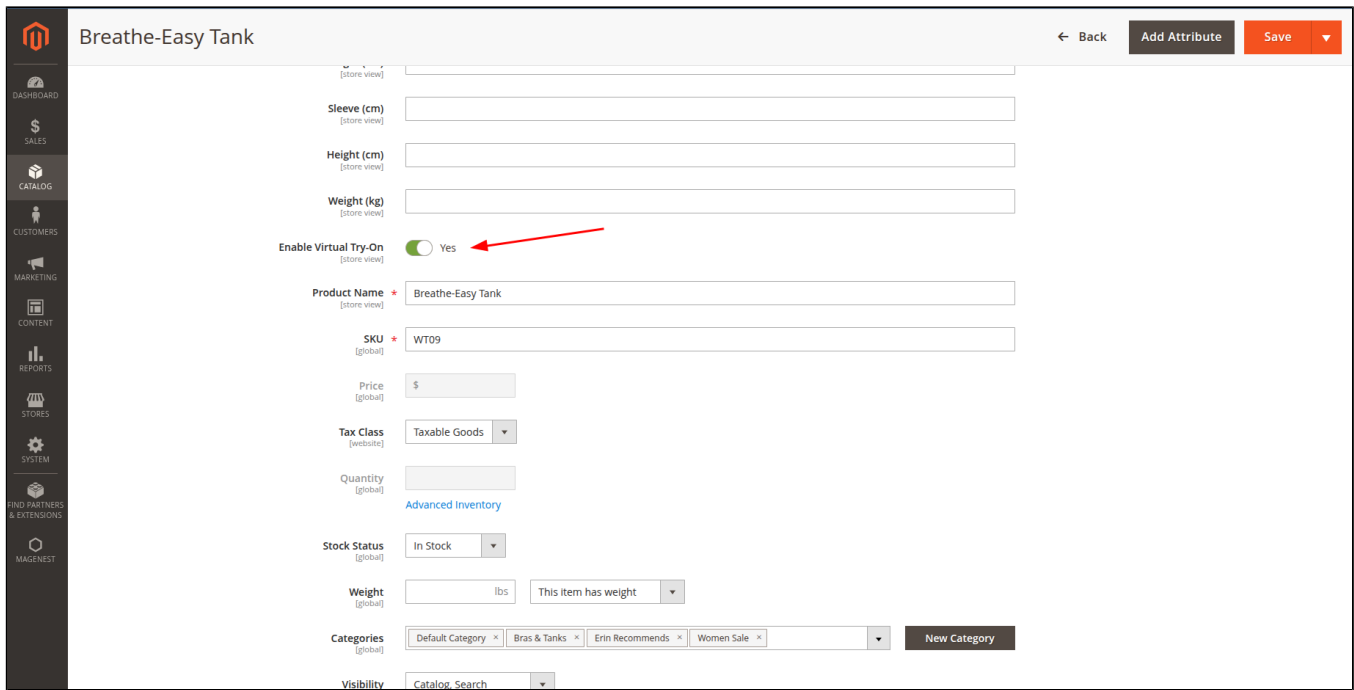
Active filters: SKU: WT09

Search by keyword

16 records found

ID	Thumbnail	Name	Type	Attribute Set	SKU	Price	Quantity	Salable Quantity	Visibility	Status	Websites	Last Updated At	Action	Height
1812		Breathe-Easy Tank	Configurable Product	Top	WT09	\$34.00	0.0000		Catalog, Search	Enabled	Main Website	Mar 17, 2026 11:55:21 AM	Edit	
1811		Breathe-Easy Tank-XL-Yellow	Simple Product	Top	WT09-XL-Yellow	\$34.00	100.0000	Default Stock: 100	Not Visible Individually	Enabled	Main Website	Mar 17, 2026 11:55:21 AM	Edit	
1810		Breathe-Easy Tank-XL-White	Simple Product	Top	WT09-XL-White	\$34.00	100.0000	Default Stock: 100	Not Visible Individually	Enabled	Main Website	Mar 17, 2026 11:55:21 AM	Edit	
1809		Breathe-Easy Tank-XL-Purple	Simple Product	Top	WT09-XL-Purple	\$34.00	100.0000	Default Stock: 100	Not Visible Individually	Enabled	Main Website	Mar 17, 2026 11:55:21 AM	Edit	
1808		Breathe-Easy Tank-L-Yellow	Simple Product	Top	WT09-L-Yellow	\$34.00	100.0000	Default Stock: 100	Not Visible Individually	Enabled	Main Website	Mar 17, 2026 11:55:21 AM	Edit	
1807		Breathe-Easy Tank-L-White	Simple Product	Top	WT09-L-White	\$34.00	100.0000	Default Stock: 100	Not Visible Individually	Enabled	Main Website	Mar 17, 2026 11:55:21 AM	Edit	

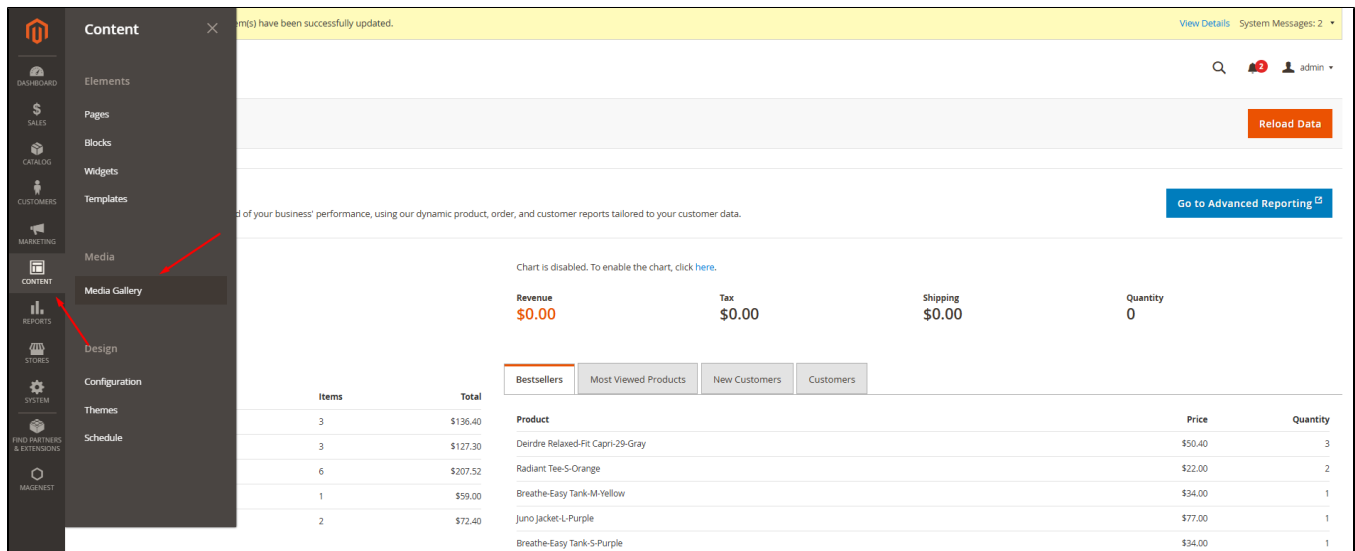
Step 3: On the product edit page, change the Virtual Try-On status using the Enable Virtual Try-On field. Click **Save** to apply the change.



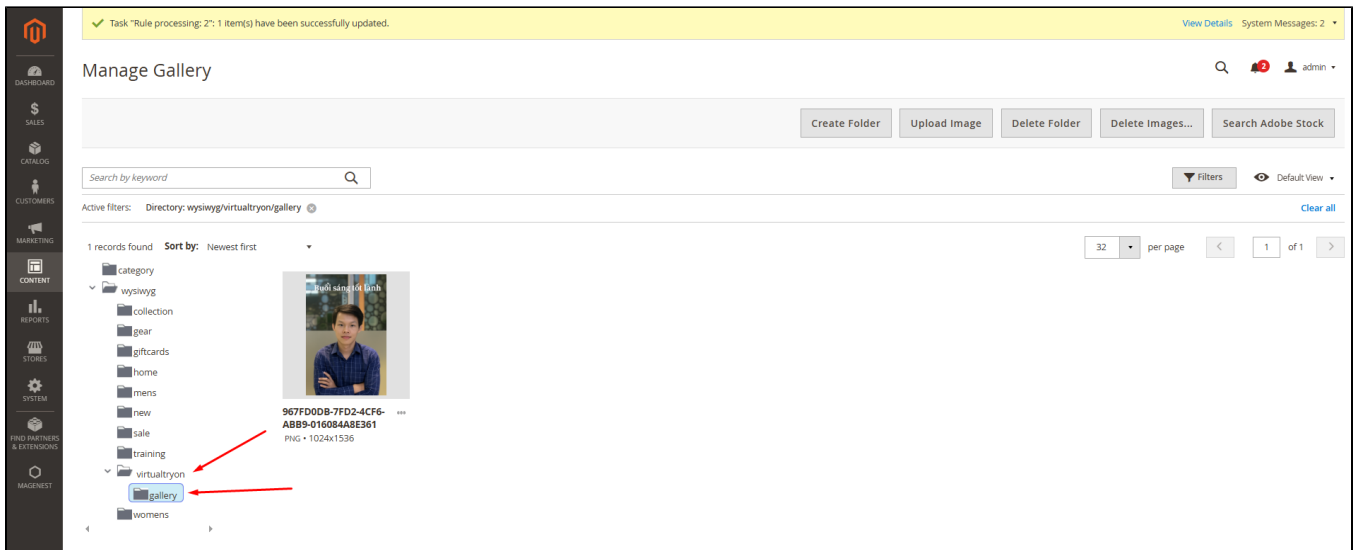
Upload Gallery Images:

Admins can build and manage image libraries based on gender, age group, body type, style, or product category, helping shoppers choose a model image that better matches their preferences and customer segment.

Step 1: Go to Content > Media > Manage Gallery.

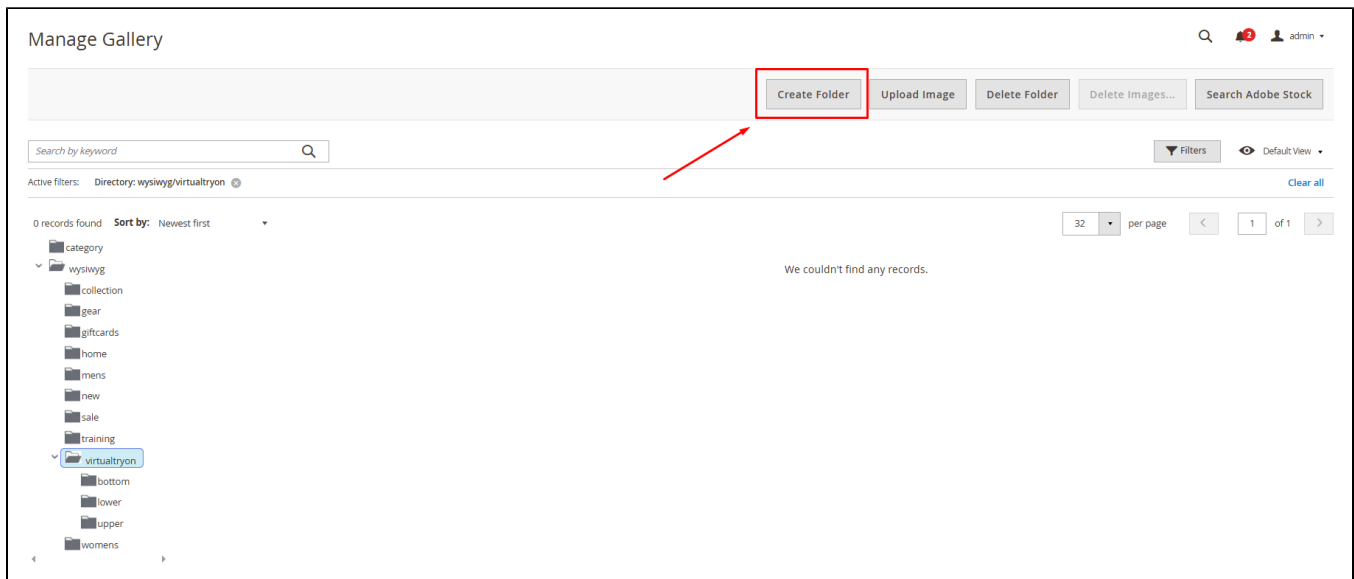


Step 2: In the folder tree panel on the left, expand wysiwyg > virtualtryon.

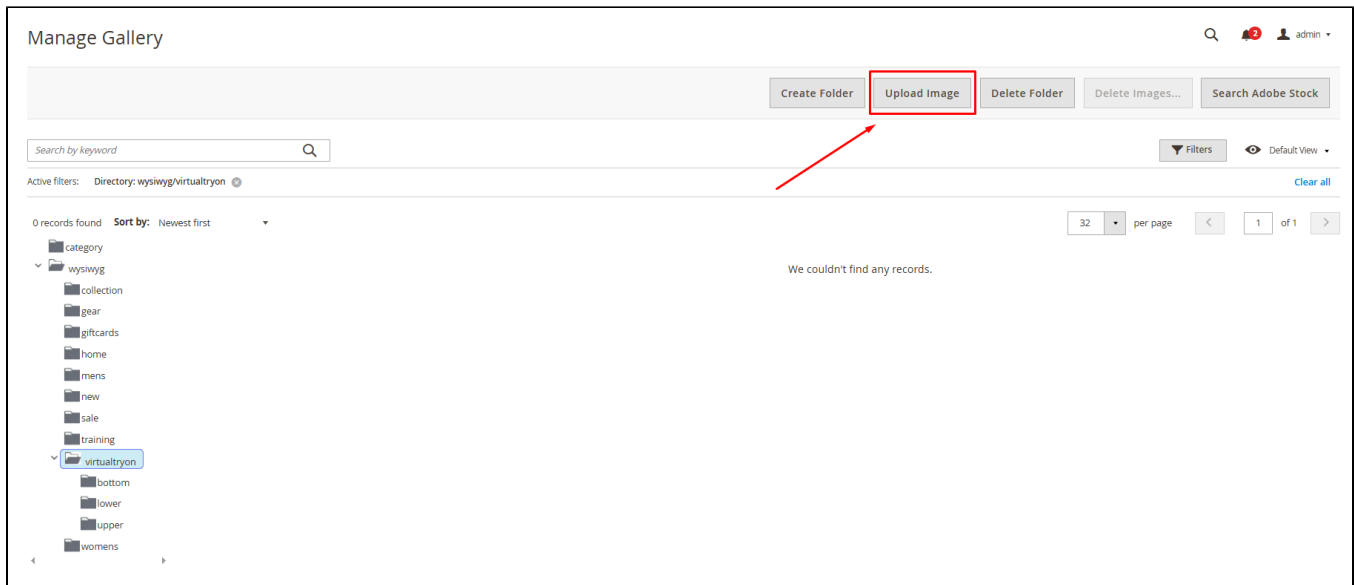


Step 3: Click **Create Folder** to create classification subfolders as needed. For example: gallery, male, female, kids, or athletic_wear.

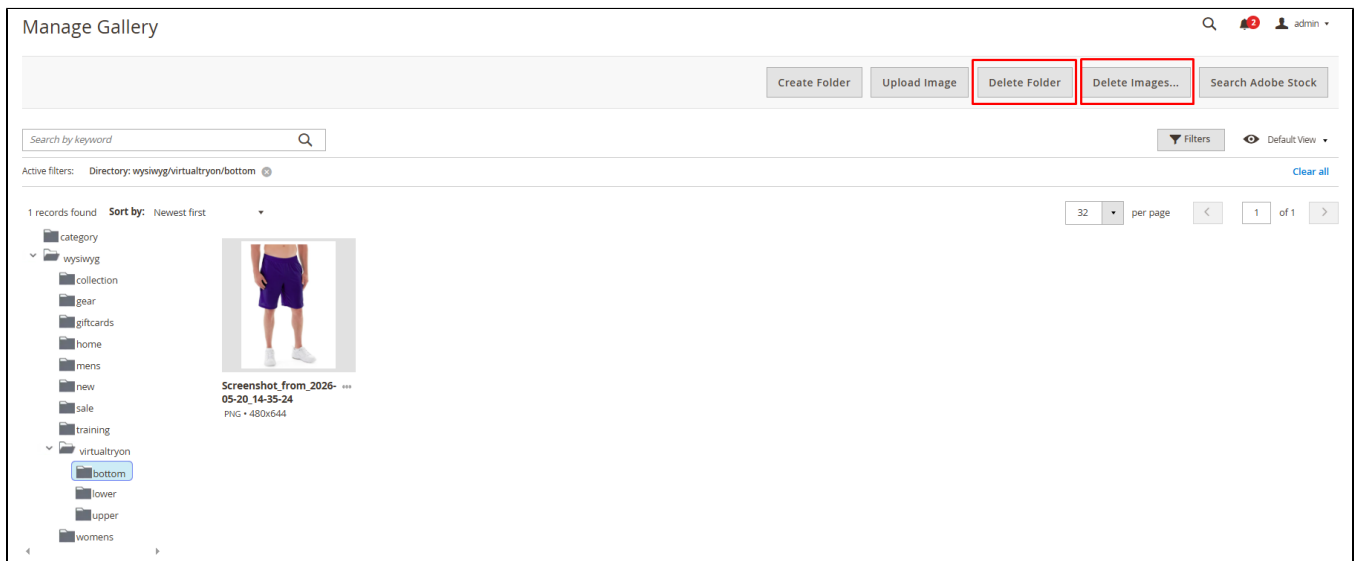
Note: Use only letters (a-z or A-Z), numbers (0-9), underscore (_) or hyphen (-) in this field. No spaces or other characters are allowed.



Step 4: Click the target folder, click **Upload Image**, then select a JPG, PNG, or WebP file.

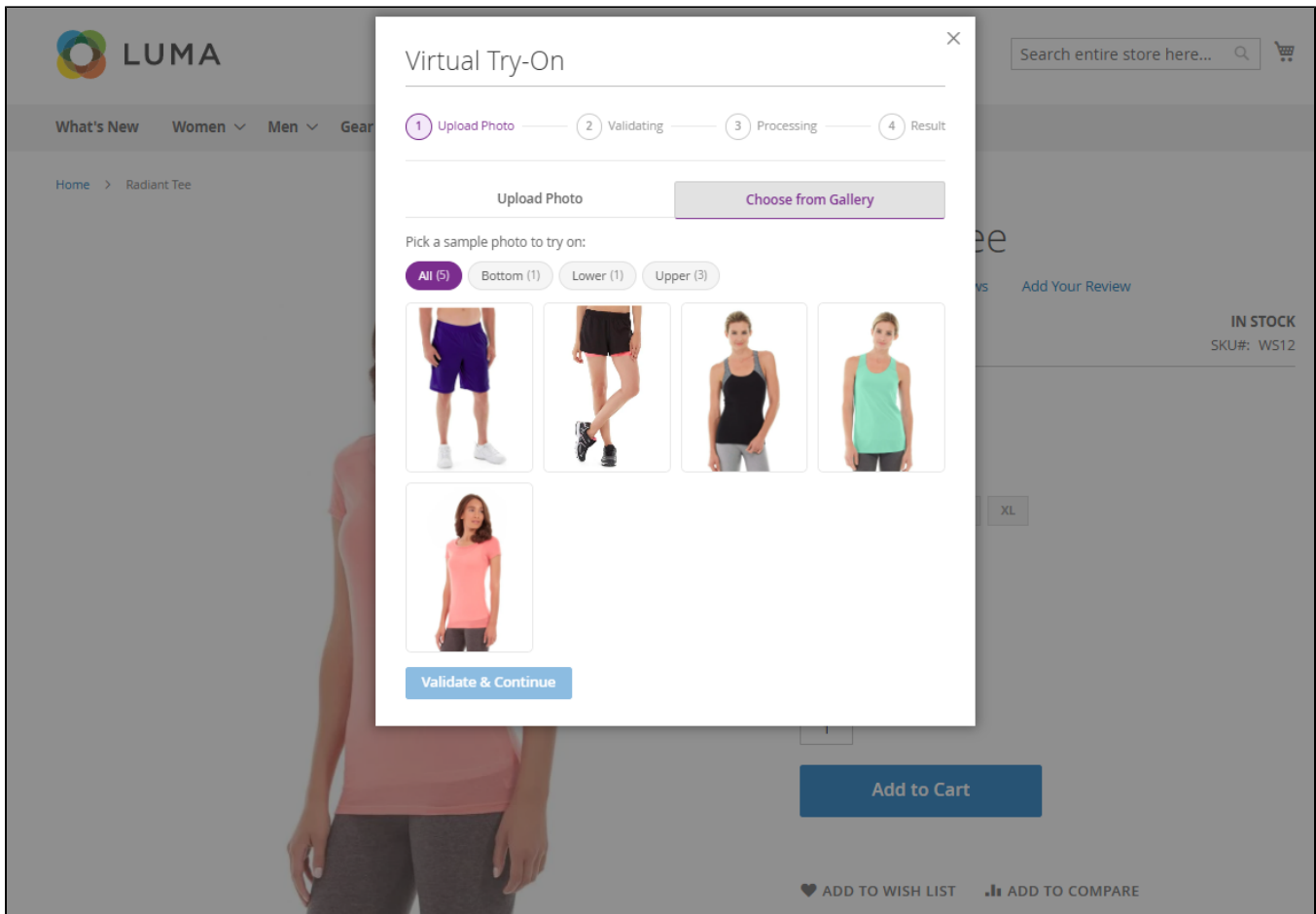


If you want to delete any folder or image, pick the folder or image then click **Delete Folder/Delete Images**.



Step 5: Refresh the product page on the storefront. The uploaded images will appear in the **Choose from Gallery** tab.

Note: There must be at least one image in the subfolder for the subfolder to be displayed on the frontend.



Frontend Experience

1. On the storefront, the customer clicks a product to open the product detail page.
2. On the product detail page, the customer clicks the **Virtual Try-On** button to use the feature.



Radiant Tee

★★★★☆ 3 Reviews [Add Your Review](#)

\$22.00

IN STOCK
SKU#: WS12

[Recommend Size](#)

Size

[XS](#) [S](#) [M](#) [L](#) [XL](#)

Color

[Blue](#) [Orange](#) [Purple](#)

[Virtual Try-On](#)

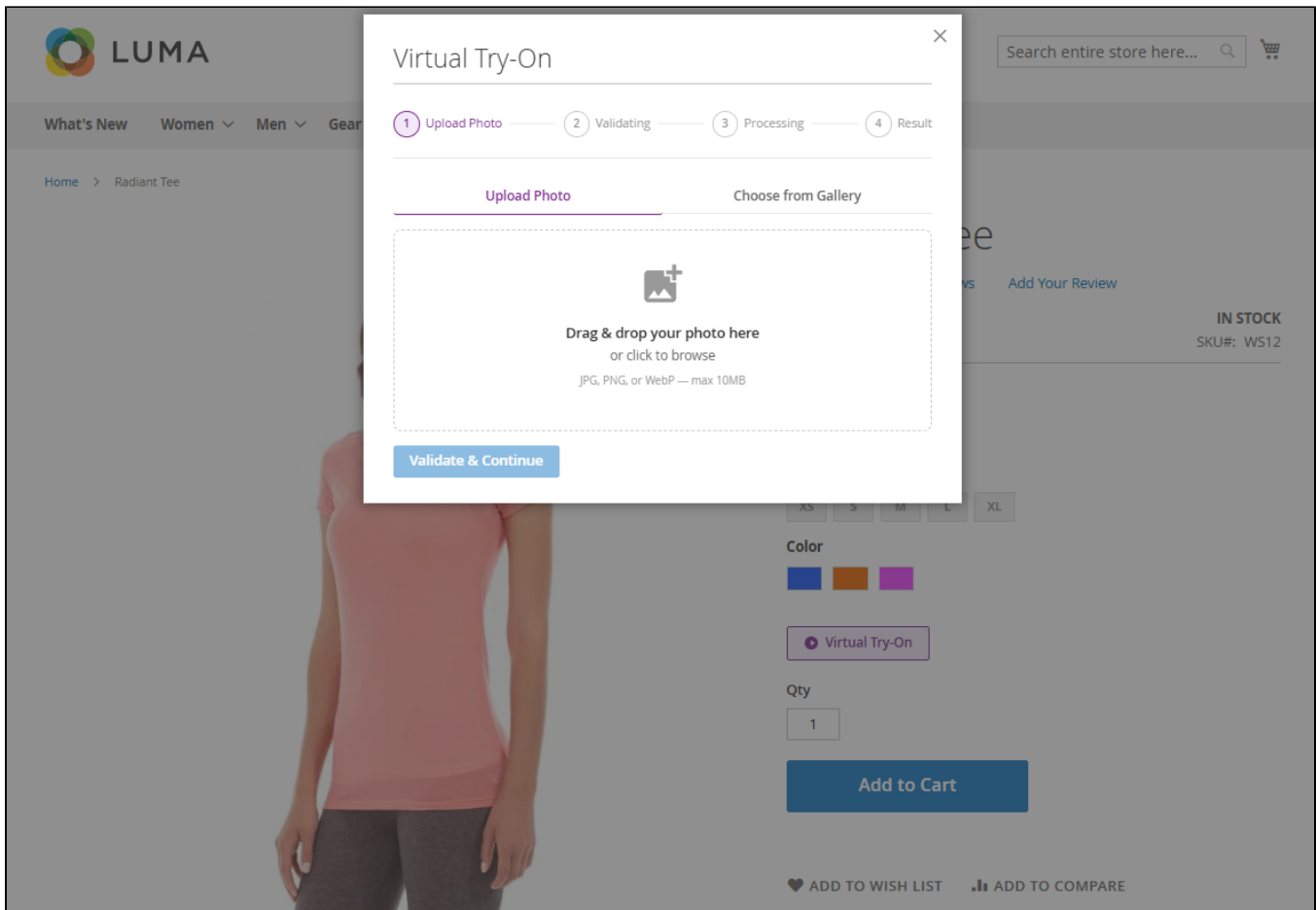
Qty

1

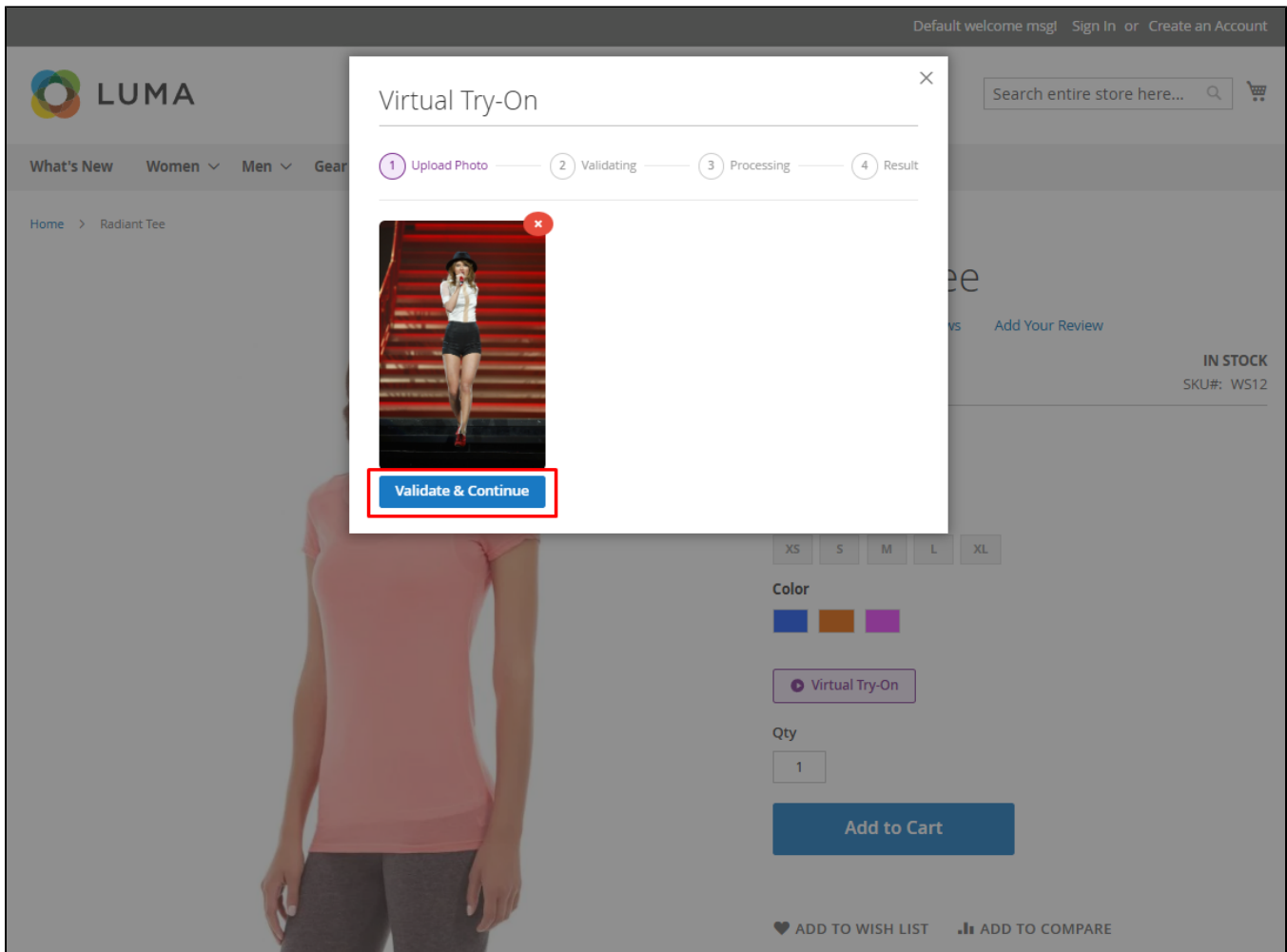
[Add to Cart](#)

[ADD TO WISH LIST](#) [ADD TO COMPARE](#)

3. The image upload modal appears. The customer can click the upload area, drag and drop an image, or choose an image from the gallery.



4. After the image is uploaded successfully, the customer can preview it before moving to the next step. To continue, click **Validate & Continue**.




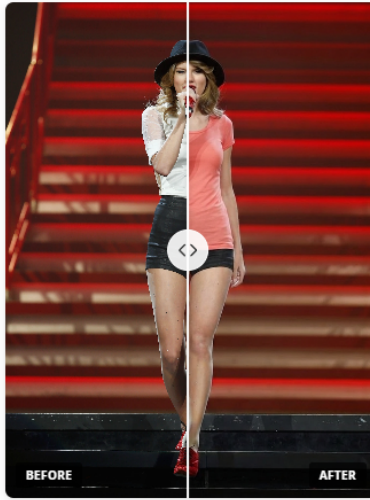
5. AI validates whether the uploaded image is suitable for try-on generation. If the image meets the requirements, the system automatically applies the product image to the corresponding body area in the uploaded photo. The final result is the generated try-on image.

- **Before/After Comparison:** Customers can compare the original photo and the virtual try-on result by moving the before/after slider across the image. Dragging the slider to the left or right allows them to clearly see how the selected product looks on their uploaded photo.

Virtual Try-On



-  Upload Photo
-  Validating
-  Processing
-  Result


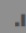


Try Another Photo

ee
ys Add Your Review
IN STOCK
SKU#: WS12

XL

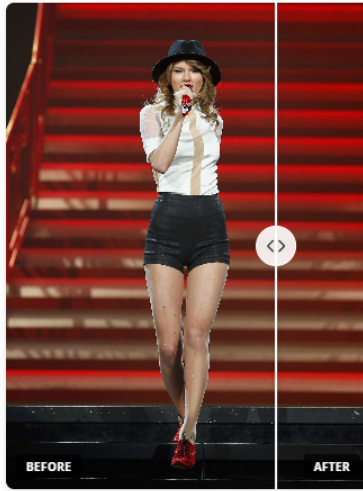
Add to Cart

 ADD TO WISH LIST  ADD TO COMPARE

Virtual Try-On

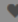
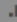


-  Upload Photo
-  Validating
-  Processing
-  Result

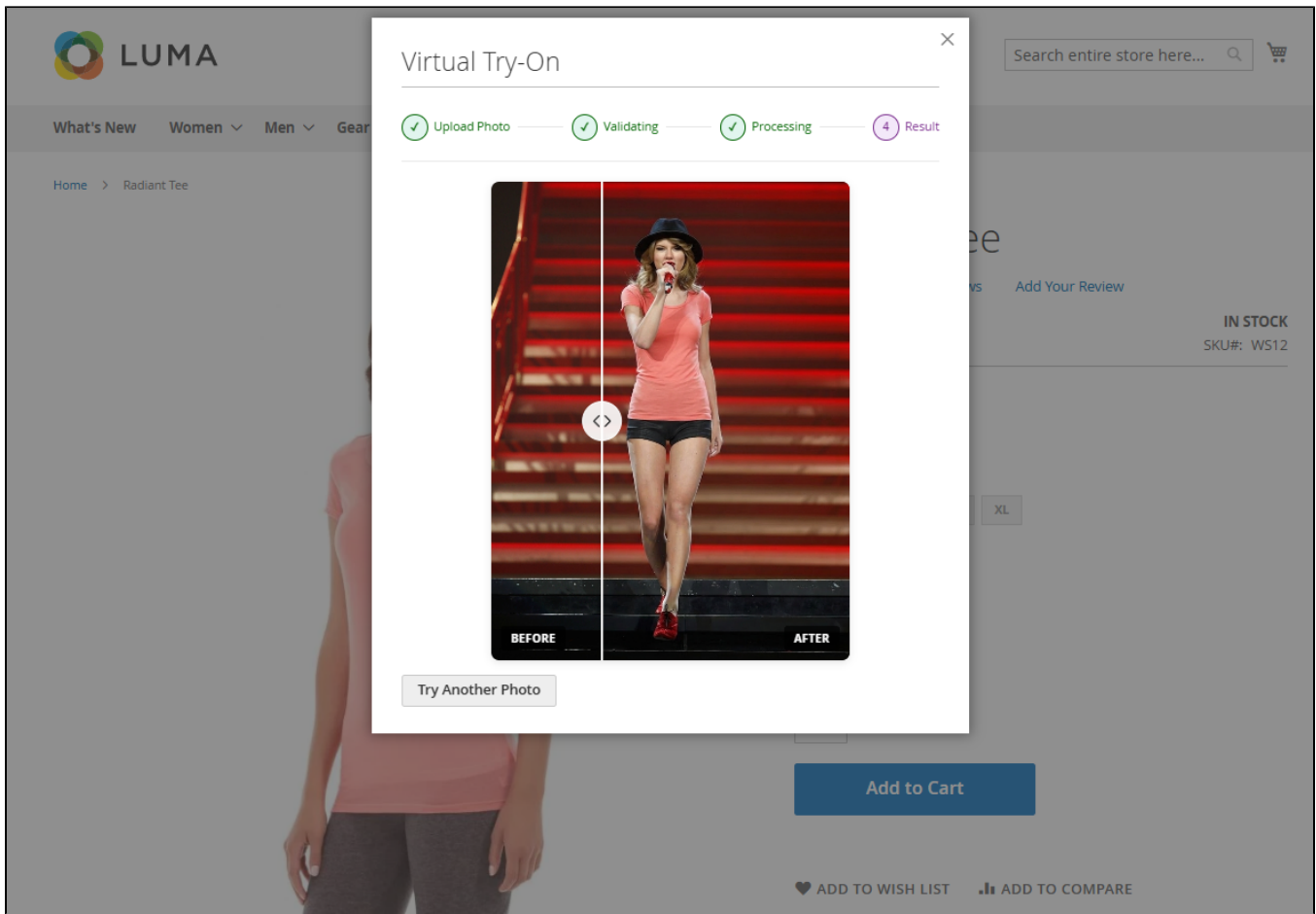


Try Another Photo

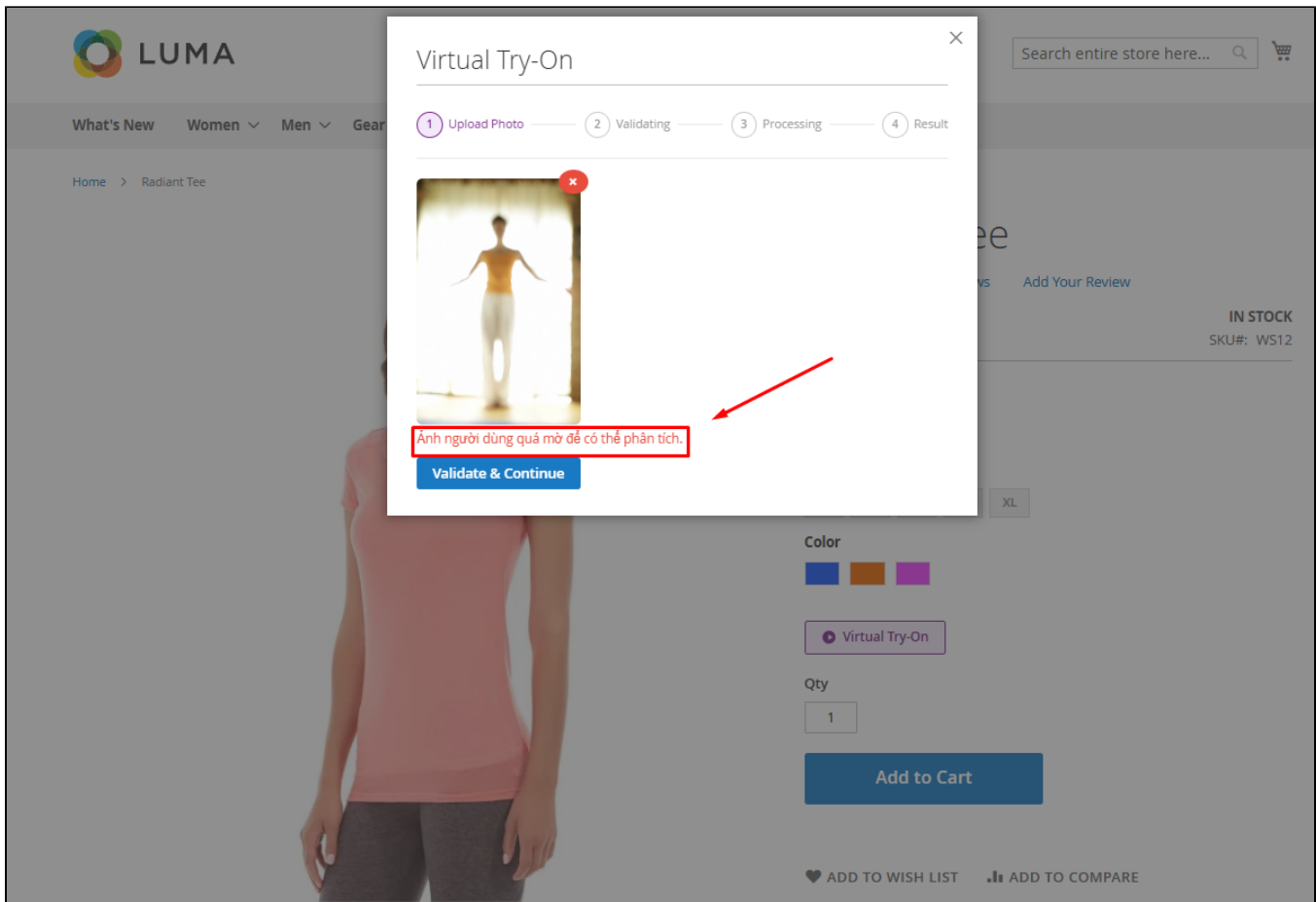
Add to Cart

 ADD TO WISH LIST  ADD TO COMPARE

ee
ws Add Your Review
IN STOCK
SKU#: WS12
XL



- If the image does not meet the requirements, the system will not continue with the try-on step. Instead, it displays a clear notification to help users understand the issue and upload a better image or choose another one from the gallery.



6. Shoppers can use the Virtual Try-On feature in two flexible ways: uploading their own photo or selecting a ready-to-use image from the gallery. This helps reduce friction for users who may not want to upload personal photos, while still allowing them to experience how the selected product looks in a realistic visual preview.

- **Step 1:** Click **Choose from Gallery**
- **Step 2:** Pick the model picture you want for the Try-On feature
- **Step 3:** Click **Validate & Continue** to process the feature

Virtual Try-On ✕

1 Upload Photo — 2 Validating — 3 Processing — 4 Result

Upload Photo

Choose from Gallery



Drag & drop your photo here
or click to browse

JPG, PNG, or WebP — max 10MB

Validate & Continue

ee
s Add Your Review
IN STOCK
SKU#: WS12

XS S M L XL

Color



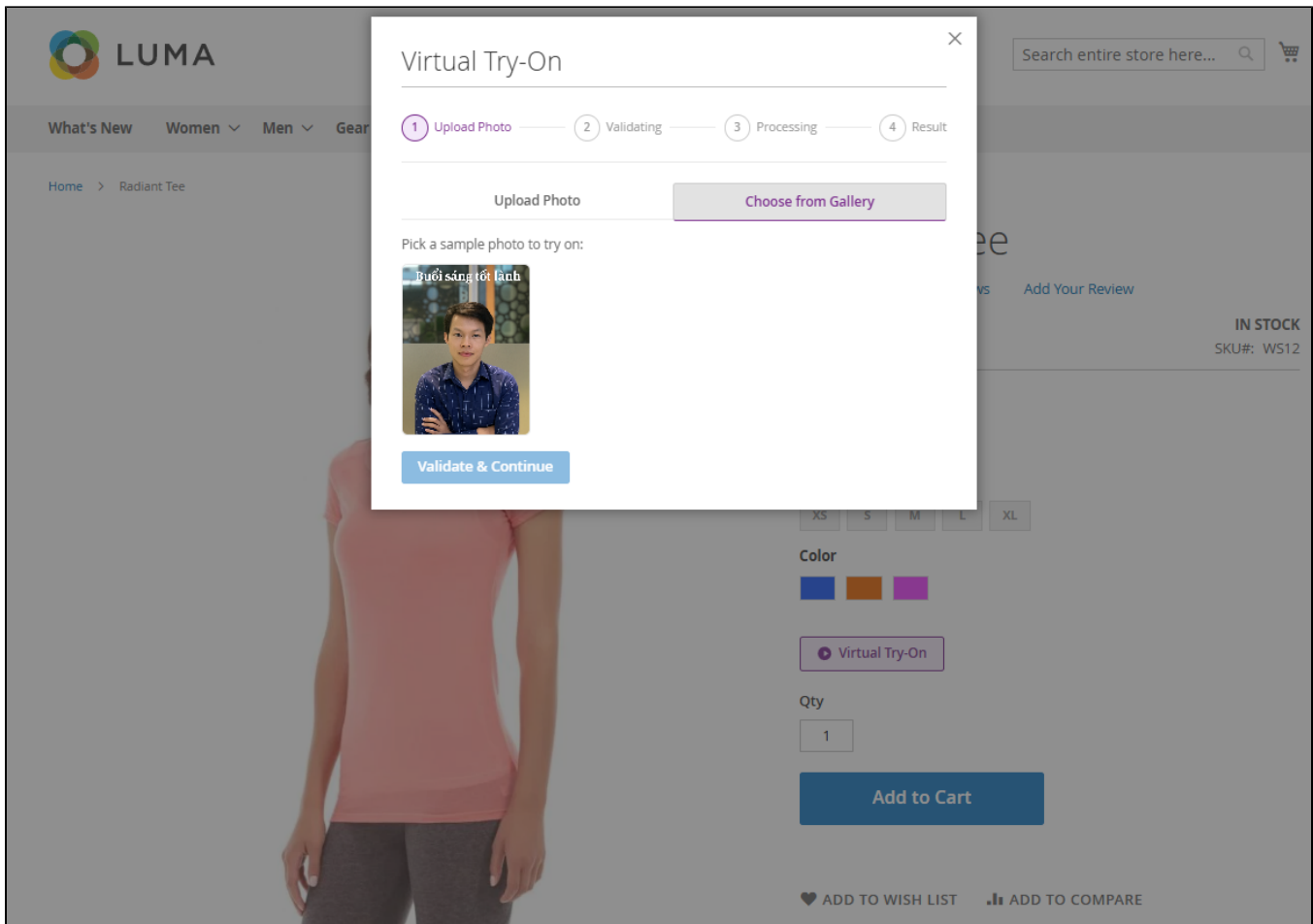
Virtual Try-On

Qty

1

Add to Cart

ADD TO WISH LIST ADD TO COMPARE



Update

- When a bug fix or new feature is released, we will provide you with the module's new package.
- All you need to do is repeating the above installing steps and uploading the package onto your store. The code will automatically override.
- Flush the config cache. Your store and newly installed module should be working as expected.

Support

- We will reply to support requests within **2 business days**.
- We will offer **lifetime free update and 6 months of free support for all of our paid products**. Support includes answering questions related to our products, bug/error fixing to make sure our products fit well in your site exactly like our demo.
- Support **DOES NOT** include other services such as customizing our products, installation, and uninstallation service.

Once again, thank you for purchasing our extension. If you have any questions relating to this extension, please do not hesitate to contact us for support.