

AI Size Recommender - User Guide

Thank you for purchasing our extension. If you have any questions that are beyond the scope of this document, please feel free to contact us via support@magenest.com

By: Magenest | Support Portal: <http://servicedesk.izysync.com/servicedesk/customer/portal/7>

- 1 Introduction
 - 1.1 Highlight Features
 - 1.2 System Requirements
 - 1.2.1 Magento requirements
 - 1.2.2 Product requirements
 - 1.2.3 AI service requirements
- 2 Admin Configuration
 - 2.1 General Settings:
 - 2.2 Webhook Settings (optional):
 - 2.2.1 Webhook Notifications:
- 3 Size Chart Dependency
 - 3.1 Categories
 - 3.1.1 Category fields
 - 3.1.2 Add New/Edit Category
 - 3.2 Charts
 - 3.2.1 Size Charts fields
 - 3.2.2 Add New/Edit Chart
- 4 Product Category Resolution
- 5 Frontend Experience
 - 5.1 Step 1: Enter Measurements
 - 5.1.1 Body Measurements:
 - 5.1.2 Unit Switching:
 - 5.1.3 Additional Fields:
 - 5.1.4 Analyze Button:
 - 5.2 Step 2: AI Analysis
 - 5.3 Step 3: Recommendation Result
 - 5.3.1 Confidence badge:
 - 5.3.2
 - 5.3.3 View full size chart:
 - 5.3.4 Fallback Behavior
- 6 Product Feed and Size Chart Export
 - 6.1 Product Feed
 - 6.2 Size Chart Export
- 7 Update
- 8 Support

Introduction

AI Size Recommender for Magento 2 is an AI-powered extension developed by Magenest to help shoppers choose the right product size directly on the Product Detail Page. When shoppers click this button, they can enter their body measurements and receive an AI-powered size recommendation based on the product's size chart data.

Highlight Features

For Admin:

- Enable or disable AI Size Recommender from Magento Admin.
- Select the product size attribute used for recommendation, such as size or shoe_size.
- Enable webhook notifications when product feed or size chart data changes.
- Manage Size Chart Categories and Size Charts.
- Map Magento catalog categories to Size Chart Categories.
- Define measurement keys for each product category.
- Control which product groups display the Recommend Size button through category mapping.

For Customer:

- AI-powered size recommendation
- Product-specific measurement fields
- Unit switching support
- Additional fit-related options
- AI analysis screen
- Confidence level display

- Full size chart access
- Fallback experience

System Requirements

Before installing and configuring AI Size Recommender, make sure the Magento environment meets the following requirements.

Magento requirements

- Your store should be running on Magento 2.4.x

Product requirements

The **Recommend Size** button only appears when all required product conditions are met:

1. The module is enabled in configuration.
2. The product type is **configurable**.
3. The product uses the configured **Size Attribute** as one of its configurable options.
4. The product belongs to a catalog category mapped to an active Size Chart Category (check Size Chart for detail).
5. The mapped Size Chart Category has measurement keys defined.

If one of these conditions is missing, the **Recommend Size** button will not appear on the product page.

AI service requirements

To connect Magento with the AI recommendation engine, you need:

- API Base URL
- API Key
- Webhook URL, if webhook sync is enabled
- Webhook Secret Key, if webhook sync is enabled

The API Base URL and API Key are provided by the AI service provider. If you do not have these details yet, contact Magenest for guidance on how to obtain them from the provider.

Admin Configuration

On the admin sidebar, go to: **Stores > Configuration > Magenest > AI Size Recommender**

+ General Settings:

- **Enable:** Select Yes to enable AI Size Recommender.
- **Size Attribute:** Select the product attribute used for size, such as size or shoe_size.
- **API Base URL:** Enter the AI service endpoint.
- **API Key:** Enter the API Key provided by the AI service provider.

If you do not have API Base URL and API Key yet, contact Magenest for guidance on how to obtain them from the provider.

After completing the configuration, click **Save Config**.

General Settings

| | |
|---|---|
| Enable <small>[store view]</small> | <input type="text" value="Yes"/> |
| | <small>Enable AI Size Recommender on product pages.</small> |
| Size Attribute <small>[store view]</small> | <input type="text" value="Size (size)"/> |
| | <small>Only configurable products using this attribute will show the Recommend Size button.</small> |
| API Base URL <small>[global]</small> | <input type="text" value="https://asr-vto.izysync.com"/> |
| | <small>Size Recommender AI service base URL (no trailing slash).</small> |
| API Key <small>[global]</small> | <input type="password" value="....."/> |
| | <small>X-API-Key header value for authentication.</small> |

Developer note: The selected Size Attribute must be used as a configurable option on eligible configurable products. If the product does not use this attribute, the Recommend Size button will not appear.

+ Webhook Settings (optional):

Webhook settings are optional. Use them when the AI service needs to be notified automatically whenever product feed or size chart data changes.

- **Enable Feed Webhook:** Select Yes to enable automatic webhook notification.
- **Webhook URL:** Enter the webhook endpoint provided by the AI service.
- **Webhook Secret Key:** Enter the secret key used to authenticate webhook requests.

Webhook Settings

Enable Feed Webhook [global] ▼
Notify AI service when product feed generation completes.

Webhook URL [global]
AI service endpoint to notify on feed completion.

Webhook Secret Key [global]
Secret key for webhook authentication.

If you are not sure whether webhook sync is required, keep the default setting and confirm with the technical implementation team.

Webhook Notifications:

When webhook is enabled, Magento sends notifications to the AI service when relevant data is updated.

Supported Webhook Events:

| Event | Trigger | Payload Example |
|------------------------|--------------------------------------|---|
| Product feed generated | Product feed generation is completed | { "event": "feed.generated", "timestamp": "...", "files_count": N } |
| Size chart exported | Size chart data is exported via CLI | { "event": "feed.generated", "timestamp": "...", "files_count": 1 } |

Webhook requests use:

Method: POST

Content-Type: application/json

Authentication Header: X-Webhook-Secret

The webhook secret key is used to authenticate the request.

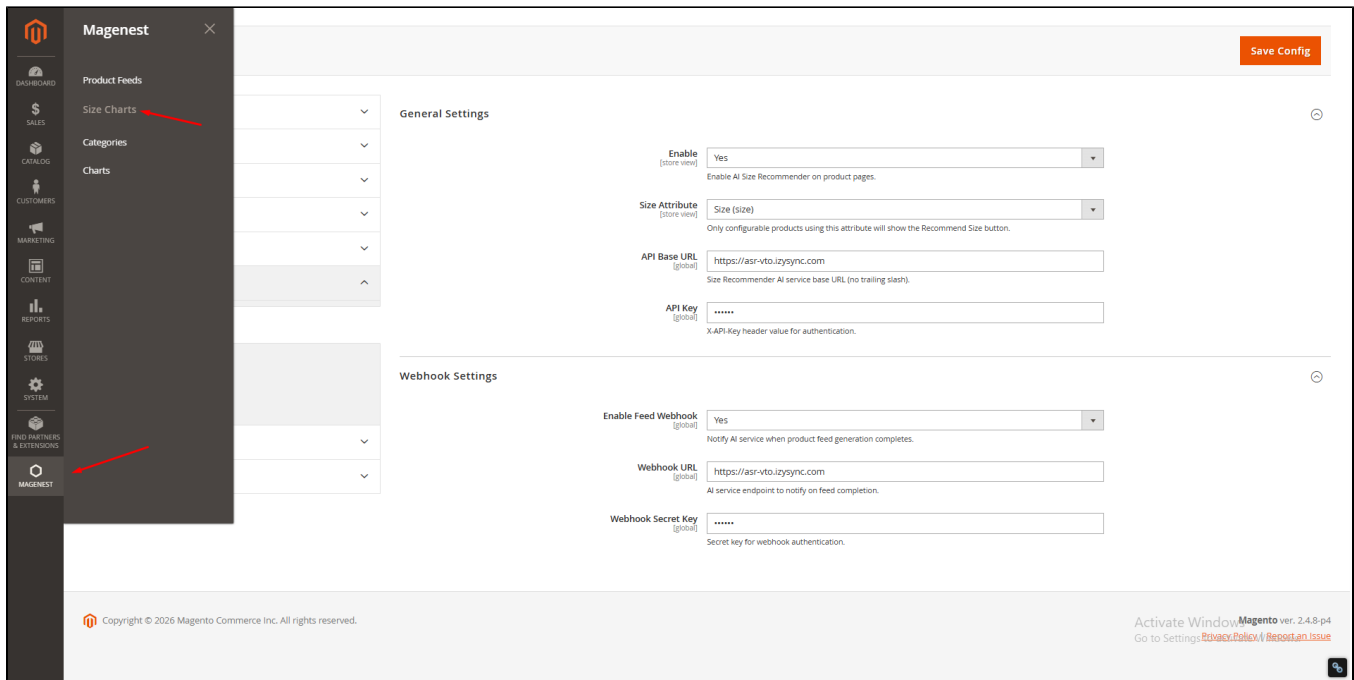
Webhook Troubleshooting:

| Issue | Possible Cause | Solution |
|-----------------------------------|--------------------------------|---|
| Webhook not sent | Webhook is disabled | Enable Feed Webhook in Admin |
| Webhook rejected | Secret key mismatch | Check Webhook Secret Key |
| AI service receives outdated data | Size chart export not run | Run size chart export command again |
| Webhook URL unreachable | Incorrect URL or network issue | Verify endpoint and server connectivity |
| No response from AI service | AI service unavailable | Check AI service status and logs |

Size Chart Dependency

AI Size Recommender depends on Size Chart data to generate accurate recommendations. The Size Chart module allows admins to create size chart categories, map them to Magento catalog categories, and enter measurement values for each size. The same data is used by AI Size Recommender on the frontend.

On the admin sidebar, go to: **Magenest > Size Charts**



There are two main menu items:

- **Categories:** Define measurement fields and map them to Magento catalog categories.
- **Charts:** Create actual size charts with measurement values.

Categories

Category fields

Go to: **Magenest > Size Charts > Categories**

A Size Chart Category defines the product group and the measurement fields used for recommendation.

Example categories:

| ID | Code | Label | Active | Priority | Actions |
|----|------------------|-----------------------------------|--------|----------|---------|
| 10 | shoes | Shoes & Footwear | Yes | 10 | Select |
| 14 | bags | Bags & Luggage | Yes | 20 | Select |
| 15 | accessories | Accessories (Belts, Hats, Gloves) | Yes | 30 | Select |
| 13 | underwear | Bras & Underwear | Yes | 35 | Select |
| 9 | dresses | Dresses & Jumpsuits | Yes | 40 | Select |
| 12 | children_bottoms | Children's Bottoms | Yes | 45 | Select |
| 8 | bottoms | Bottoms (Pants, Shorts, Skirts) | Yes | 50 | Select |
| 11 | children_tops | Children's Tops | Yes | 55 | Select |
| 7 | tops | Tops (Shirts, T-Shirts, Jackets) | Yes | 60 | Select |

- **ID:** Auto-generated identifier.
- **Code:** Unique category code, such as tops, bottoms, or shoes.
- **Label:** Display name of the Size Chart Category.
- **Active:** Shows whether the category is active.
- **Priority:** Smaller value means higher priority when resolving matched categories.
- **Action:** Edit or delete the category.

Add New/Edit Category

Add **New Category** or **Edit** existing row.

Size Chart Categories

admin

Add New Category

Filters | Default View | Columns

9 records found

20 per page | 1 of 1

| ID | Code | Label | Active | Priority | Actions |
|----|------------------|-----------------------------------|--------|----------|------------------------|
| 10 | shoes | Shoes & Footwear | Yes | 10 | Select • Edit • Delete |
| 14 | bags | Bags & Luggage | Yes | 20 | Select • |
| 15 | accessories | Accessories (Belts, Hats, Gloves) | Yes | 30 | Select • |
| 13 | underwear | Bras & Underwear | Yes | 35 | Select • |
| 9 | dresses | Dresses & Jumpsuits | Yes | 40 | Select • |
| 12 | children_bottoms | Children's Bottoms | Yes | 45 | Select • |
| 8 | bottoms | Bottoms (Pants, Shorts, Skirts) | Yes | 50 | Select • |
| 11 | children_tops | Children's Tops | Yes | 55 | Select • |
| 7 | tops | Tops (Shirts, T-Shirts, Jackets) | Yes | 60 | Select • |

+ General Information:

The General Information section contains the basic information of the Size Chart Category.

General Information

Code *
Unique identifier (e.g., tops, bottoms, shoes, bags)

Label *

Active Yes

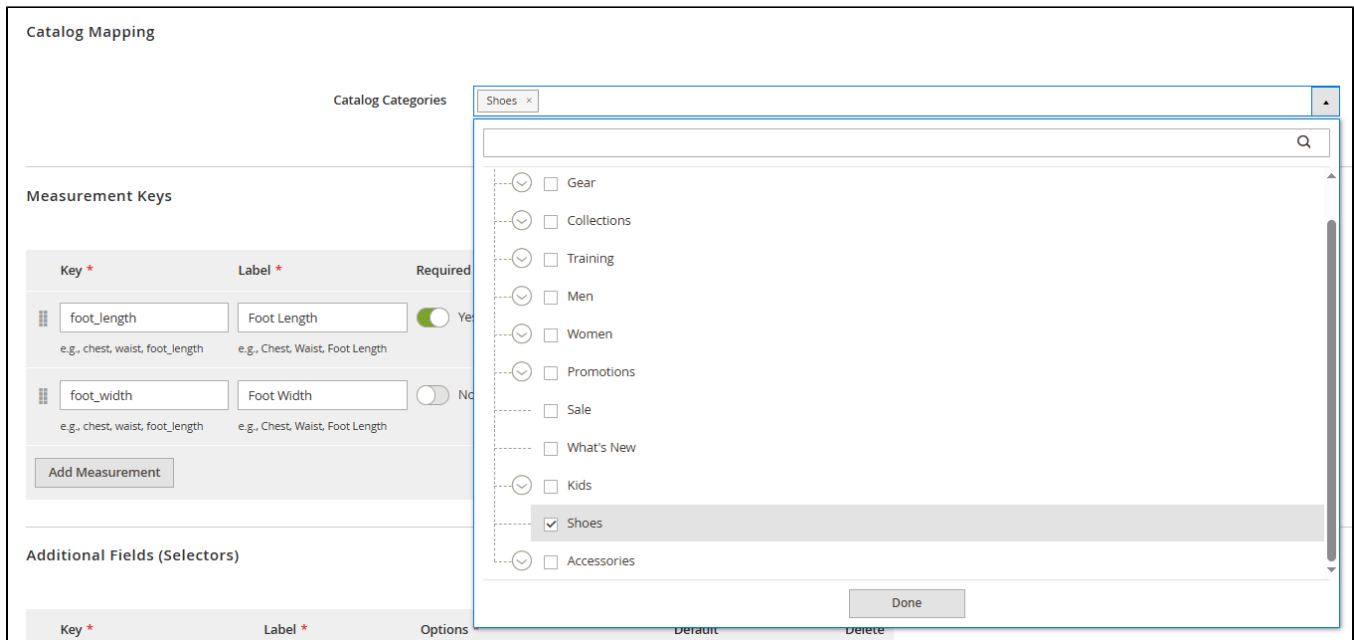
Priority *
Smaller value = higher priority when a product matches multiple size chart categories.

| Field | Description | Required |
|-----------|--|----------|
| Code | Unique identifier. Use lowercase letters and no spaces. Example: tops, bottoms, shoes. | Yes |
| Label | Display name. Example: Tops & T-Shirts. | Yes |
| Is Active | Enable or disable this Size Chart Category. | Yes |
| Priority | Defines priority when a product matches multiple Size Chart Categories. The category with the smaller Priority value will be selected. | Yes |

+ Catalog Mapping:

The Catalog Mapping section defines which Magento catalog categories are linked to this Size Chart Category.

Catalog Categories: Select one or more Magento catalog categories. Products under these categories, including their child categories, will be mapped to this Size Chart Category.

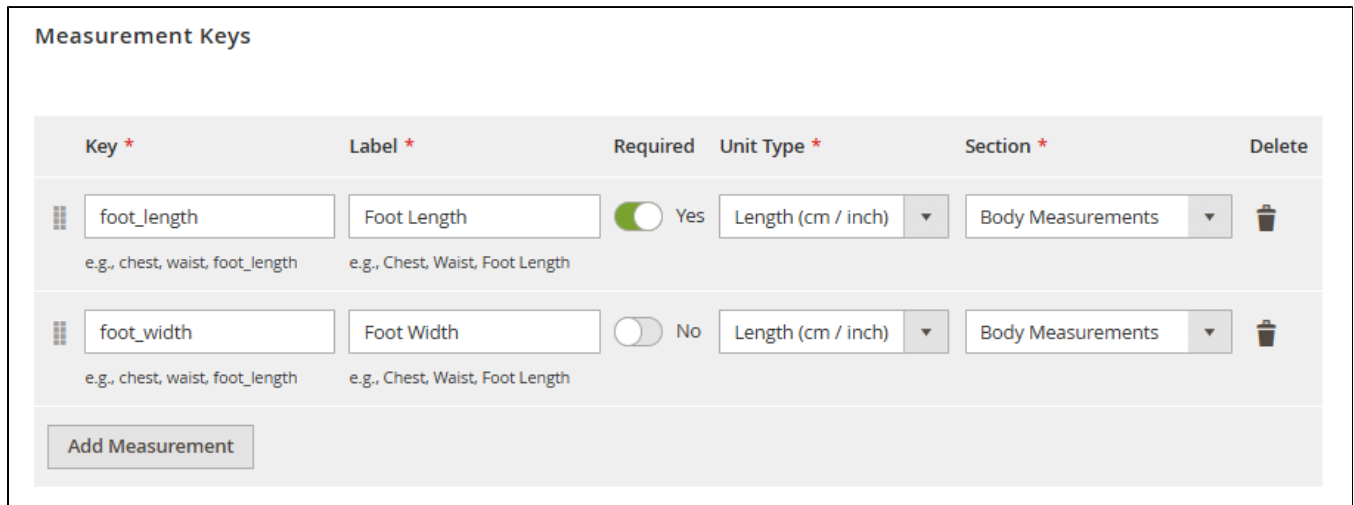


How Catalog Mapping Works:

- When a product belongs to a Magento catalog category, for example: Women > Tops, the system checks the category tree from child to parent to find the mapped Size Chart Category.
- If multiple Size Chart Categories match, the category with the smallest Priority value will be selected.
- Each Magento catalog category can only be mapped to one Size Chart Category at a time. If the same catalog category is assigned to a new Size Chart Category, it will be automatically removed from the previous one.

+ Measurement Keys:

The Measurement Keys section defines the body measurements that the size chart will collect and use.



Click **Add Measurement** to add a new measurement field.

| Field | Description | Example |
|-----------|---|--|
| Key | Internal identifier. Use lowercase letters and underscores. | chest, waist, hip |
| Label | Label displayed to users. | Chest, Waist, Hip |
| Required | Defines whether this field is required for AI recommendation. | Yes / No |
| Unit Type | Type of measurement unit. | length (cm / inch), weight (kg / lbs), age (years) |
| Section | Position of the field in the form. | before, body, after |

Common Measurement Keys by Category:

| Category | Common Keys |
|--------------|---|
| Tops | height, weight, chest, waist, shoulder, sleeve, length |
| Bottoms | height, weight, waist, hip, inseam, outseam, thigh |
| Dresses | height, weight, chest, waist, hip, length, shoulder |
| Shoes | foot_length, foot_width |
| Underwear | chest, underbust, waist, hip |
| Kids Tops | child_age, height, weight, chest, waist, shoulder, length |
| Kids Bottoms | child_age, height, weight, waist, hip, inseam |

+ Additional Fields:

The **Additional Fields (Selectors)** section defines non-measurement options displayed as selectable chips on the frontend.

These fields can be used for additional customer preferences such as body shape, fit preference, shoe width, or cup size.

Click **Add Selector** to add a new selector field.

Additional Fields (Selectors)

| Key * | Label * | Options * | Default | Delete |
|---|---|---|--|--------|
| <div style="border: 1px solid #ccc; padding: 2px; margin-bottom: 5px;">shoe_width</div> <small>e.g., body_shape, fit_preference, shoe_width</small> | <div style="border: 1px solid #ccc; padding: 2px; margin-bottom: 5px;">Shoe Width</div> <small>e.g., Body Shape, Fit Preference</small> | <div style="border: 1px solid #ccc; padding: 2px; margin-bottom: 5px;">Narrow, Standard, Wide</div> <small>Comma-separated values, e.g.: Slim, Fit, Regular, Relaxed</small> | <div style="border: 1px solid #ccc; padding: 2px; margin-bottom: 5px;">Standard</div> <small>Must match one of the options above</small> | |
| <div style="border: 1px solid #ccc; padding: 2px; margin-bottom: 5px;">body_shape</div> <small>e.g., body_shape, fit_preference, shoe_width</small> | <div style="border: 1px solid #ccc; padding: 2px; margin-bottom: 5px;">Fit Preference</div> <small>e.g., Body Shape, Fit Preference</small> | <div style="border: 1px solid #ccc; padding: 2px; margin-bottom: 5px;">Slim, Fit, Regular, Relaxed</div> <small>Comma-separated values, e.g.: Slim, Fit, Regular, Relaxed</small> | <div style="border: 1px solid #ccc; padding: 2px; margin-bottom: 5px;">Regular</div> <small>Must match one of the options above</small> | |

Add Selector

| Field | Description | Example |
|---------|--|--|
| Key | Internal identifier | body_shape, fit_preference, shoe_width |
| Label | Label displayed to users | Body Shape, Fit Preference, Shoe Width |
| Options | Comma-separated list of selectable options | slim, average, athletic, plus |
| Default | Default selected option | average |

Charts

Size Charts fields

Go to: **Magenest > Size Charts > Charts**

The Charts grid displays all existing size charts.

| Field | Description |
|----------|----------------------------|
| ID | Auto-generated identifier |
| Name | Name of the size chart |
| Category | Parent Size Chart Category |
| Gender | male, female, or unisex |

| | |
|------------|------------------------------------|
| Region | asia, eu, us, uk, or international |
| Active | Shows whether the chart is active |
| Updated At | Last updated date |
| Actions | Edit or delete the chart |

Add New/Edit Chart

Click **Add New Chart** to create a new chart, or click **Edit** on an existing row.

Size Charts 🔍 🔔 👤 admin

Add New Chart

🏠 Filters 👁 Default View ⚙ Columns

9 records found 20 per page < 1 of 1 >

| ID | Name | Category | Gender | Region | Active | Updated At | Actions |
|----|-----------------------------|-----------------------------------|--------|---------------|--------|-------------------------|--|
| 17 | Tops - Unisex | Tops (Shirts, T-Shirts, Jackets) | Unisex | International | Yes | Apr 17, 2026 2:38:17 PM | Select • Edit Delete |
| 18 | Bottoms - Unisex | Bottoms (Pants, Shorts, Skirts) | Unisex | International | Yes | Apr 17, 2026 2:38:17 PM | Select • |
| 19 | Dresses - Female | Dresses & Jumpsuits | Female | International | Yes | Apr 17, 2026 2:38:17 PM | Select • |
| 20 | Shoes - Unisex | Shoes & Footwear | Unisex | International | Yes | Apr 17, 2026 2:38:17 PM | Select • |
| 21 | Children's Tops - Unisex | Children's Tops | Unisex | International | Yes | Apr 17, 2026 2:38:17 PM | Select • |
| 22 | Children's Bottoms - Unisex | Children's Bottoms | Unisex | International | Yes | Apr 17, 2026 2:38:17 PM | Select • |
| 23 | Bras & Underwear - Female | Bras & Underwear | Female | International | Yes | Apr 17, 2026 2:38:17 PM | Select • |
| 24 | Bags - Unisex | Bags & Luggage | Unisex | International | Yes | Apr 17, 2026 2:38:17 PM | Select • |
| 25 | Accessories - Unisex | Accessories (Belts, Hats, Gloves) | Unisex | International | Yes | Apr 17, 2026 2:38:17 PM | Select • |

+ General Information:

General Information

Chart Name *
E.g., "Men's Tops - Asia", "Women's Shoes - EU"

Category * ▼

Gender * ▼

Region * ▼

Active Yes

| Field | Description | Required |
|-----------|--|----------|
| Name | Descriptive chart name. Example: Women Tops - Asia | Yes |
| Category | Select the parent Size Chart Category | Yes |
| Gender | Target gender: male, female, or unisex | Yes |
| Region | Target region: asia, eu, us, uk, or international | Yes |
| Is Active | Enable or disable this chart | Yes |

Each combination of **Category + Gender + Region** must be unique. You cannot create two charts with the same Category, Gender, and Region combination.

+ Size Entries:

After selecting a Size Chart Category, the measurement columns are automatically generated based on the Measurement Keys configured for that category.

Size Entries

| Size Label * | Height | Weight | Chest | Waist | Length | Sleeve | Shoulder | Delete |
|--------------|--------|--------|-------|-------|--------|--------|----------|--------|
| XS | 155 | 45 | 82 | 68 | 64 | 58 | 40 | |
| S | 160 | 52 | 86 | 72 | 66 | 59 | 42 | |
| M | 165 | 60 | 92 | 78 | 69 | 61 | 44 | |
| L | 170 | 70 | 98 | 84 | 72 | 62 | 46 | |
| XL | 175 | 80 | 104 | 90 | 74 | 63 | 48 | |
| XXL | 180 | 90 | 110 | 96 | 76 | 64 | 50 | |

Each row represents one size.

| Field | Description | Example |
|---------------------|---|------------------------------|
| Size Label | Size name | XS, S, M, L, XL, 38, 40, 8.5 |
| Measurement Columns | Numeric values for each measurement key | chest = 88, waist = 72 |
| Sort Order | Display order in ascending order | 0, 1, 2, 3 |

Notes:

- Measurement values should be entered in centimeters for length and kilograms for weight.
- The system automatically converts these values to inches or lbs on the frontend.
- The measurement values from the first row are used as placeholder suggestions in the size recommendation form.
- Admins can add as many size rows as needed.

Product Category Resolution

When a customer views a product page, the system determines the applicable Size Chart Category through the following process:

- Collect the catalog category IDs of the product.
- For each catalog category, traverse the category tree from child to parent.
- Check which Size Chart Category has matching mapped_catalog_category_ids.
- Score matched results based on Priority and specificity. A smaller Priority value is better, and a direct category match is more specific than a parent category match.
- Return the Size Chart Category with the highest score.
- If no matching category is found, the size chart or size recommendation feature will be hidden for that product.

Frontend Experience

On eligible product pages, the **Recommend Size** button appears near the product options or below the price, depending on the theme implementation.

Click the button to open the AI Size Recommender modal.

Step 1: Enter Measurements

In the first step, the customer enters measurement data.

Body Measurements:

The form fields are based on the product's Size Chart Category. For example:

- Tops may show height, weight, chest, and waist.
- Shoes may show foot length and foot width.
- Underwear may show chest, underbust, waist, hip, or cup size.

Required fields are marked with a red asterisk. Optional fields are labeled as optional. Placeholder values may be generated from the size chart data.

The screenshot shows the LUMA AI Size Recommender interface. The form is titled "AI Size Recommender" and has a close button (X) in the top right corner. It is divided into three steps: 1. Your Info, 2. AI Analysis, and 3. Recommendation. The current step is "Your Info".

Body Measurements (cm / inch)

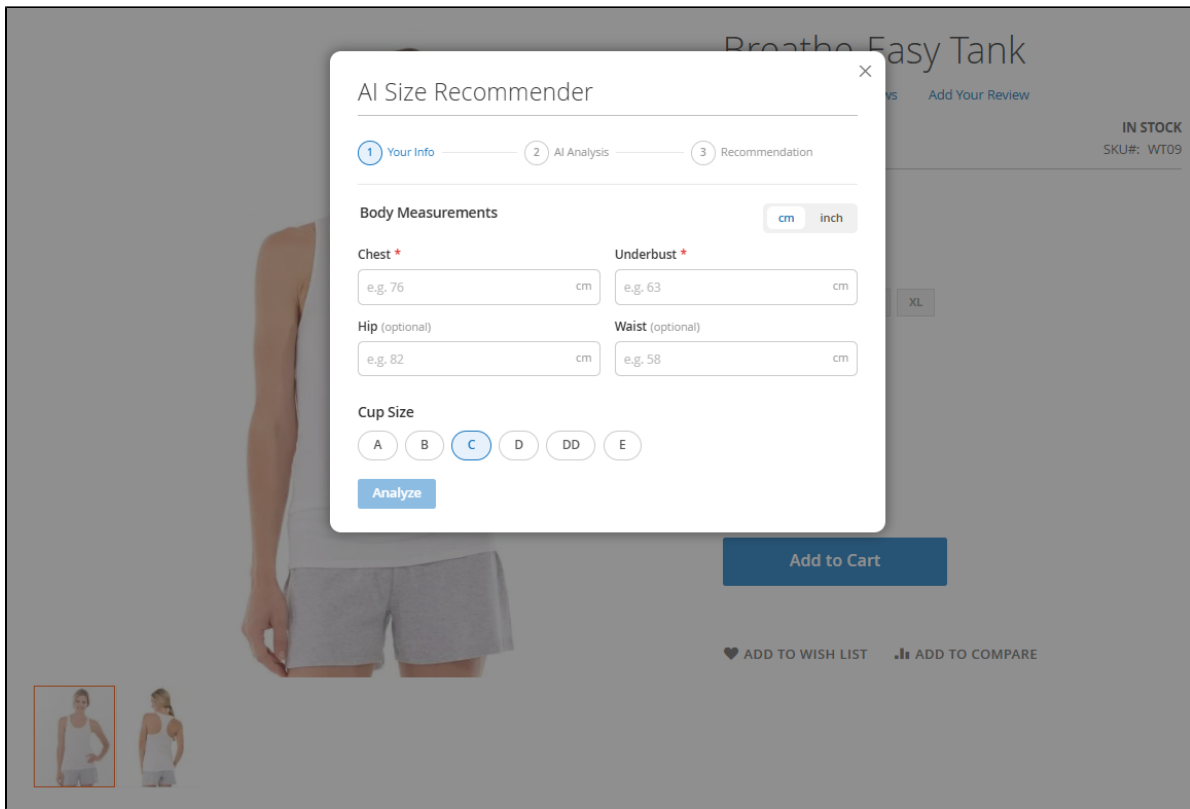
| | |
|-------------------------------------|---------------------------------------|
| Chest * e.g. 76 cm | Underbust * e.g. 63 cm |
| Hip (optional) e.g. 82 cm | Waist (optional) e.g. 58 cm |

Cup Size

A B C D DD E

Analyze

The background shows a product page for a "Breathe-Easy Tank" with a search bar, navigation menu, and product details like "IN STOCK" and "SKU#: WT09".



Unit Switching:

The form supports unit switching.

| Measurement Type | Supported Units | Default |
|------------------|-----------------|---------|
| Length | cm / inch | cm |
| Weight | kg / lbs | kg |

When the customer changes units, placeholder values are converted automatically. The entered values are sent to the AI service together with the selected unit.

AI Size Recommender ✕

1 Your Info
 2 AI Analysis
 3 Recommendation

Body Measurements

Height *

 cm

cm
inch
kg
lbs

Weight *

 kg

Chest (optional)

 cm

Waist (optional)

 cm

Length (optional)

 cm

Sleeve (optional)

 cm

Shoulder (optional)

 cm

Body Shape

Slim
Fit
Regular
Relaxed

Fit Preference

Slim fit
Regular
Relaxed
Overize

Analyze

Additional Fields:

Some product categories may show selectable chip fields.

Example:

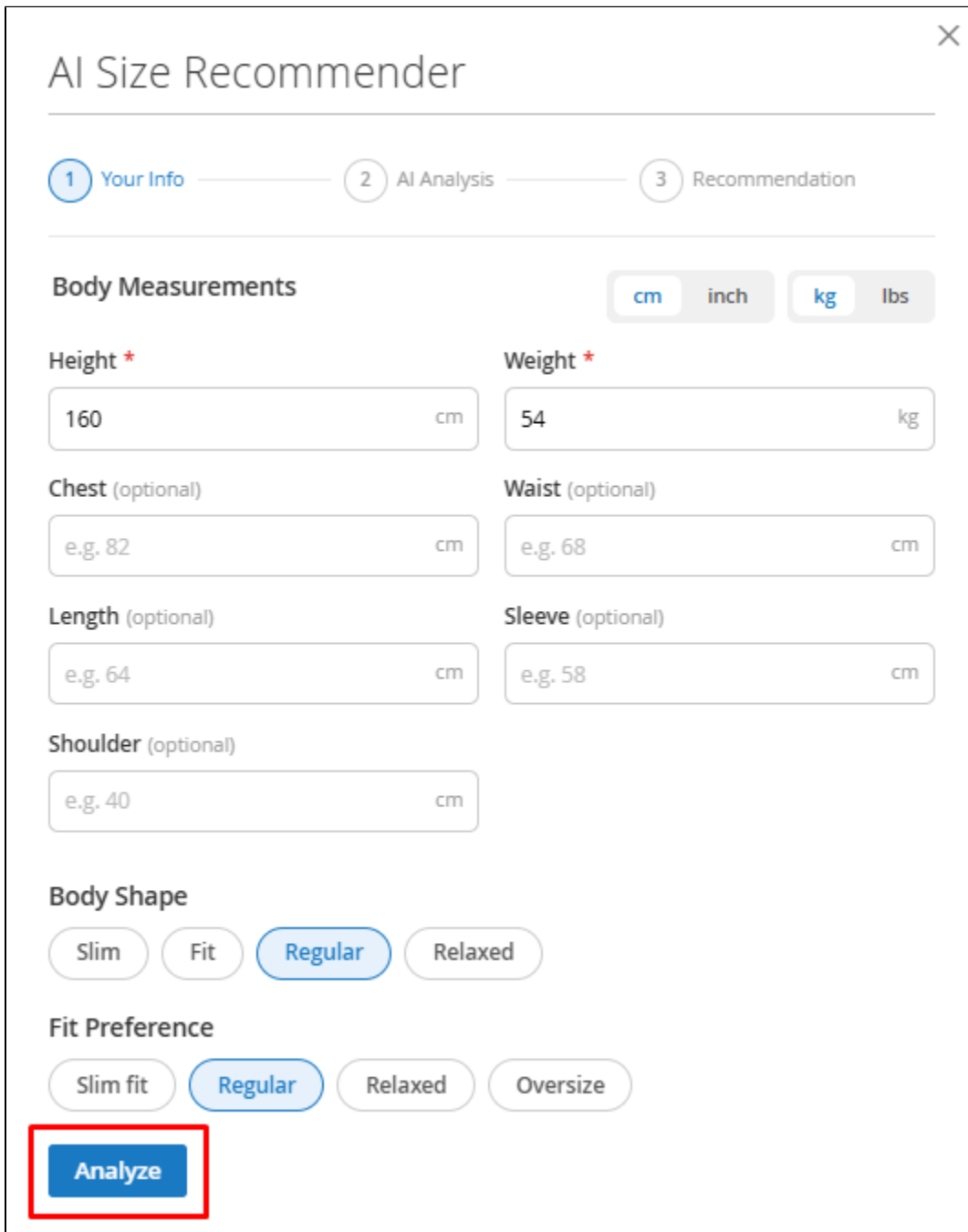
| Product Type | Additional Fields |
|----------------|--|
| Tops / Bottoms | Body Shape (slim, average, athletic, plus), Fit Preference (tight, regular, loose) |
| Shoes | Shoe Width (narrow, standard, wide) |
| Underwear | Cup Size (A, B, C, D, DD, E+) |

Each additional field allows one selected option.

Analyze Button:

The **Analyze** button is disabled until all required measurement fields are completed with valid positive numbers.

When the form is valid, the customer can click **Analyze** to send the data for AI processing.



The image shows a modal window titled "AI Size Recommender" with a close button in the top right corner. The form is divided into three steps: "1 Your Info", "2 AI Analysis", and "3 Recommendation". The "Your Info" step is active. It contains several input fields for body measurements, each with a unit selector. The "Body Measurements" section includes: Height (160 cm), Weight (54 kg), Chest (optional, e.g. 82 cm), Waist (optional, e.g. 68 cm), Length (optional, e.g. 64 cm), Sleeve (optional, e.g. 58 cm), and Shoulder (optional, e.g. 40 cm). Below this is the "Body Shape" section with buttons for Slim, Fit, Regular (selected), and Relaxed. The "Fit Preference" section has buttons for Slim fit, Regular (selected), Relaxed, and Oversize. At the bottom left, there is a blue "Analyze" button highlighted with a red rectangle.

Step 2: AI Analysis

During the AI analysis step, the modal shows a loading state.

The process includes three stages:

1. Processing
2. Comparing
3. Finalizing

Each stage is highlighted as the AI processes the customer's data.

The analysis usually takes 2–5 seconds.

Step 3: Recommendation Result

Confidence badge:

When the AI returns a result, the modal displays the recommended size.

The result may include:

| Component | Description |
|------------------------|---|
| AI Recommendation Card | Best-fit size recommended by AI |
| Alternative Card | Alternative size option when applicable |
| Confidence Badge | High confidence (green) or Medium confidence (orange) |
| Explanation | Reason why the size is recommended |
| Tip | Short fit-related advice |
| Re-enter Measurements | Returns to the input step |

AI Size Recommender

✓ Your Info — ✓ AI Analysis — 3 Recommendation

AI RECOMMENDATION

M

Best match for you

ALTERNATIVE

L

You might also consider size L for a looser fit.

High confidence

Based on your height of 160.0 cm and weight of 54.0 kg, size M is recommended for a regular fit. This size should provide a comfortable and suitable fit for you. If you prefer a slightly looser feel, size L could be a good alternative, offering more room while still looking good.

[View full size chart](#) [Re-enter measurements](#)

AI Size Recommender

✓ Your Info — ✓ AI Analysis — 3 Recommendation

AI RECOMMENDATION

XL

Best match for you

ALTERNATIVE

XXL

You might also consider XXL for an even more relaxed fit.

Medium confidence

Based on your measurements, especially your 90.0 kg weight and 89.0 cm waist, size XL would be a good starting point for a relaxed fit, as it aligns well with your waist and chest preferences. Given your relaxed fit preference and some measurements bordering the next size, you might also consider XXL for an even looser feel. Always refer to the detailed size chart for the best fit.

[View full size chart](#) [Re-enter measurements](#)

View full size chart:

The customer can click **View full size chart** to see all available sizes and their corresponding measurements.

The recommended size is highlighted in the chart. Unit labels in the chart match the unit selected by the customer, such as Chest (cm) or Chest (inch).

✕

AI Size Recommender

✓ Your Info
✓ AI Analysis
3 Recommendation

AI RECOMMENDATION

M

Best match for you

ALTERNATIVE

L

You might also consider size L for a slightly looser fit.

High confidence

Based on your height of 160.0 cm and weight of 54.0 kg, size M would likely be an excellent fit, providing a comfortable regular fit as you prefer. This size should accommodate your measurements well for a balanced look. If you prefer a slightly looser fit, size L could also be an option.

View full size chart

Re-enter measurements

| Size | Height (cm) | Weight (kg) | Chest (cm) | Waist (cm) | Length (cm) | Sleeve (cm) | Shoulder (cm) |
|------|-------------|-------------|------------|------------|-------------|-------------|---------------|
| XS | 155 | 45 | 82 | 68 | 64 | 58 | 40 |
| S | 160 | 52 | 86 | 72 | 66 | 59 | 42 |
| M | 165 | 60 | 92 | 78 | 69 | 61 | 44 |
| L | 170 | 70 | 98 | 84 | 72 | 62 | 46 |
| XL | 175 | 80 | 104 | 90 | 74 | 63 | 48 |
| XXL | 180 | 90 | 110 | 96 | 76 | 64 | 50 |

Customer can click **Re-enter Measurements** to return to the input step.

Fallback Behavior

If AI cannot provide a reliable recommendation, the system displays a fallback state.

AI Size Recommender ✕

✓ Your Info
✓ AI Analysis
! Recommendation

! We couldn't confidently recommend a size. Please check the size chart below for more guidance or try again.

Please compare with the size chart below.

| Size | Height (cm) | Weight (kg) | Chest (cm) | Waist (cm) | Length (cm) | Sleeve (cm) | Shoulder (cm) |
|------|-------------|-------------|------------|------------|-------------|-------------|---------------|
| XS | 155 | 45 | 82 | 68 | 64 | 58 | 40 |
| S | 160 | 52 | 86 | 72 | 66 | 59 | 42 |
| M | 165 | 60 | 92 | 78 | 69 | 61 | 44 |
| L | 170 | 70 | 98 | 84 | 72 | 62 | 46 |
| XL | 175 | 80 | 104 | 90 | 74 | 63 | 48 |
| XXL | 180 | 90 | 110 | 96 | 76 | 64 | 50 |

Re-enter measurements

Fallback may include:

- Warning message, such as No matching size found
- AI explanation, if available
- Full size chart for manual comparison
- Re-enter measurements button

This ensures the customer still has useful sizing information even when AI confidence is low.

Product Feed and Size Chart Export

AI Size Recommender can sync product data and size chart data with the AI engine.

Product Feed

Product feed data helps the AI engine understand the product catalog, including configurable product data, size options, category mapping, and related product context.

When product feed generation is completed, the system can notify the AI service through webhook if webhook is enabled.

Size Chart Export

Size chart data can be exported through Magento CLI:

```
bin/magento magenest:sizechart:export
```

This command creates a CSV file containing all active charts and their entries.

Run the export command after:

- Creating a new Size Chart Category
- Updating Measurement Keys
- Creating or editing Size Charts
- Updating size entry values
- Changing category mapping
- Preparing data for AI service synchronization

Update

- When a bug fix or new feature is released, we will provide you with the module's new package.
- All you need to do is repeating the above installing steps and uploading the package onto your store. The code will automatically override.
- Flush the config cache. Your store and newly installed module should be working as expected.

Support

- We will reply to support requests within **2 business days**.
- We will offer **lifetime free update and 6 months of free support for all of our paid products**. Support includes answering questions related to our products, bug/error fixing to make sure our products fit well in your site exactly like our demo.
- Support **DOES NOT** include other services such as customizing our products, installation, and uninstallation service.

Once again, thank you for purchasing our extension. If you have any questions relating to this extension, please do not hesitate to contact us for support.